



**REPORT NUMBER: 102457229COQ-001**  
ORIGINAL ISSUE DATE: February 3, 2016

**EVALUATION CENTER**  
Intertek Testing Services NA Ltd.  
1500 Brigantine Drive  
Coquitlam, B.C. V3K 7C1

**RENDERED TO**

**Domtek Building Products**  
**PO Box 20078 Hayfield Road**  
**Brandon, MB**  
**R7A 6Y8**

PRODUCT EVALUATED: Trusscore PVC Panels  
EVALUATION PROPERTY: Surface Burning Characteristics

**Report of testing Trusscore PVC Panels for compliance with the applicable requirements of the following criteria: ASTM E84-15b, Standard Test Method for Surface Burning Characteristics of Materials**

*This report is for the exclusive use of Intertek's Client and is provided pursuant to the agreement between Intertek and its Client. Intertek's responsibility and liability are limited to the terms and conditions of the agreement. Intertek assumes no liability to any party, other than to the Client in accordance with the agreement, for any loss, expense or damage occasioned by the use of this report. Only the Client is authorized to copy or distribute this report and then only in its entirety. Any use of the Intertek name or one of its marks for the sale or advertisement of the tested material, product or service must first be approved in writing by Intertek. The observations and test results in this report are relevant only to the sample tested. This report by itself does not imply that the material, product, or service is or has ever been under an Intertek certification program.*

# TEST REPORT

# 1 Table of Contents

---

	PAGE
1 Table of Contents .....	2
2 Introduction .....	3
3 Test Samples .....	3
3.1 SAMPLE SELECTION .....	3
3.2 SAMPLE AND ASSEMBLY DESCRIPTION .....	3
4 Testing and Evaluation Methods.....	4
4.1 TEST STANDARD.....	4
5 Testing and Evaluation Results .....	5
5.1 RESULTS AND OBSERVATIONS.....	5
6 Conclusion .....	6
APPENDIX A – Data Sheets .....	2 Pages
REVISION SUMMARY	

## 2 Introduction

---

Intertek Testing Services NA Ltd. (Intertek) has conducted testing for Domtek Building Products to evaluate the surface burning characteristics of Trusscore PVC panels. Testing was conducted in accordance with the standard methods of ASTM E84-15b, *Standard Test Method for Surface Burning Characteristics of Materials*.

This evaluation began February 3, 2016 and was completed the same day.

## 3 Test Samples

---

### 3.1. SAMPLE SELECTION

Samples were submitted to Intertek directly from the client and were not independently selected for testing. The sample panels were received at the Evaluation Center on December 17, 2015.

### SAMPLE AND ASSEMBLY DESCRIPTION

Upon receipt of the samples at the Intertek Coquitlam laboratory, they were placed in a conditioning room where they remained in an atmosphere of  $23 \pm 3^{\circ}\text{C}$  ( $73.4 \pm 5^{\circ}\text{F}$ ) and  $50 \pm 5\%$  relative humidity.

The sample products were described as,  $\frac{1}{2}$  in. thick by 16 in. wide by 12 ft. long PVC panels. The panels were identified by the client as Trusscore PVC Panels.

For this trial run, 24 in. wide by 24 ft. of sample material was supported by  $\frac{1}{4}$  in. steel rods spaced every 24 in. and 20 ga. 2 in x 2 in galvanized steel netting spanning the upper ledge of the flame spread tunnel. A layer of 6 mm reinforced cement board was placed over top of the samples, the tunnel lid was lowered into place, and the samples were then tested in accordance with ASTM E84-15b.

## 4 Testing and Evaluation Methods

---

### 4.1. TEST STANDARD

The results of the tests are expressed by indexes, which compare the characteristics of the sample under tests relative to that of select grade red oak flooring and inorganic-cement board.

#### (A) Flame Spread Index:

This index relates to the rate of progression of a flame along a sample in the 25 foot tunnel. A natural gas flame is applied to the front of the sample at the start of the test and drawn along the sample by a draft kept constant for the duration of the test. An observer notes the progression of the flame front relative to time.

The test apparatus is calibrated such that the flame front for red oak flooring passes out the end of the tunnel in five minutes, thirty seconds (plus or minus 15 seconds).

#### (B) Smoke Developed:

A photocell is used to measure the amount of light, which is obscured by the smoke passing down the tunnel duct. When the smoke from a burning sample obscures the light beam, the output from the photocell decreases. This decrease with time is recorded and compared to the results obtained for red oak, which is defined to be 100.

## 5 Testing and Evaluation Results

---

### 5.1. RESULTS AND OBSERVATIONS

#### (A) Flame Spread

The resultant flame spread indexes are as follows:  
(Index rounded to nearest 5)

Sample Material	Flame Spread	Flame Spread Index
Trusscore PVC Panels	9	10

#### (B) Smoke Developed

The areas beneath the smoke developed curve and the related indexes are as follows:  
(For smoke developed indexes 200 or more, index is rounded to the nearest 50. For smoke developed indexes less than 200, index is rounded to nearest 5)

Sample Material	Smoke Developed	Smoke Developed Index
Trusscore PVC Panels	397	400

#### (C) Observations

During the test, the sample surface ignited at approximately 34 seconds, and the flame began to progress along the sample until it reached the maximum flame spread.

## 6 Conclusion

---

The ½ in. thick Trusscore PVC Panels submitted by Domtek Building Products, exhibited the following flame spread characteristics when tested in accordance with ASTM E84-15b, *Standard Test Method for Surface Burning Characteristics of Materials*.

Sample Material	Flame Spread Index	Smoked Developed Index
Trusscore PVC Panels	10	400

The conclusions of this test report may not be used as part of the requirements for Intertek product certification. Authority to Mark must be issued for a product to become certified.

### INTERTEK TESTING SERVICES NA LTD.

Tested and  
Reported by:

  
Greg Philp  
Technician – Building Products

Reviewed by:

  
Riccardo DeSantis  
Manager – Building Products

## APPENDIX A

### DATA SHEETS

## ASTM E84-15b DATA SHEETS

### ASTM E84

Page 1 of 2

Client: Domtek Building Products  
Date: 02 03 2016  
Project Number: 102457229  
Test Number: 1  
Operator: Greg Philp  
Specimen ID: White PVC Trusscore Panels 1/2 in. thick

#### TEST RESULTS

**FLAMESPREAD INDEX: 10**  
**SMOKE DEVELOPED INDEX: 400**

#### SPECIMEN DATA . . .

Time to Ignition (sec): 34  
Time to Max FS (sec): 452  
Maximum FS (feet): 3.1  
Time to 980 F (sec): Never Reached  
Time to End of Tunnel (sec): Never Reached  
Max Temperature (F): 551  
Time to Max Temperature (sec): 471  
Total Fuel Burned (cubic feet): 45.00  
  
FS\*Time Area (ft\*min): 17.8  
Smoke Area (%A\*min): 523.1  
Unrounded FSI: 9.2  
Unrounded SDI: 396.9

#### CALIBRATION DATA . . .

Time to Ignition of Last Red Oak (Sec): 44.0  
Red Oak Smoke Area (%A\*min): 131.8

TESTED BY  
*[Signature]*

REVIEWED BY  
*[Signature]*

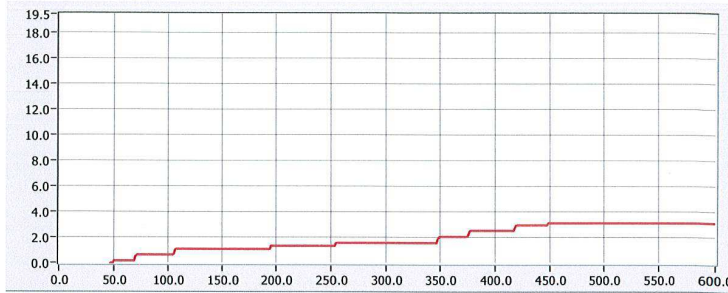


### ASTM E84-15b DATA SHEETS

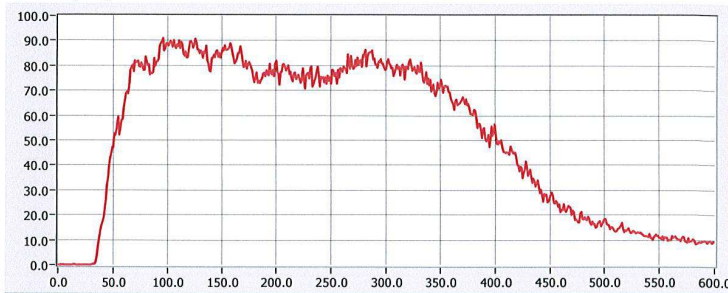
Project No: 102457229

Page 2 of 2

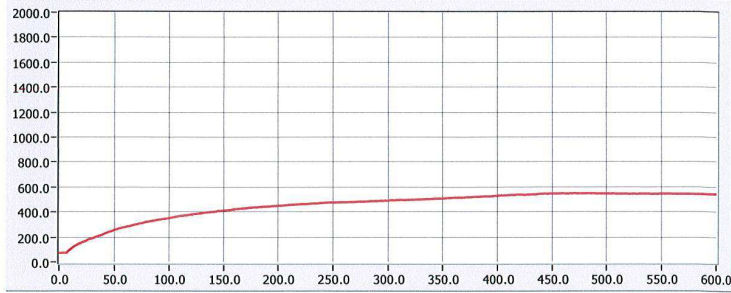
FLAME SPREAD (ft)



Smoke (%A)



Temperature (°F)



Time (sec)

600

*Handwritten signature*

*Handwritten initials*

## REVISION SUMMARY

<b>DATE</b>	<b>PAGE(S)</b>	<b>SUMMARY</b>
February 3, 2016	All	Original Issue Date